



48 Max Michaelis Street
Montgomery Park
Johannesburg
2195
South Africa
brandz@mweb.co.za
Cell +27 11 82442 9246

I-Cube / Sure Park Systems
Roadblock demo for the JMPD
Date : W/E 18/19 March

DEMO EQUIPMENT: A single lane, low speed PC based LPR system was provided as a demonstration of the HIGH-SPEED TRAFFIC MULTI-LANE PORTABLE LPR SYSTEM, which is required.

SYSTEM DESCRIPTION: SeeTraffic is a PC based vehicle license plate recognition (LPR) and processing system, specially designed for high-speed traffic applications. The system can support multiple traffic lanes in various configurations, and single or double cameras per lane.

SEE TRAFFIC head camera / illumination units can be vehicle mounted, on the roadside, on bridges, or above other above-lane structures, as well as at mobile temporary installations. The system may also include a special software-trigger, which eliminates the need for external triggering mechanisms such as loop detectors, or laser sensors.

SYSTEM USE: This system can be used for traffic surveillance and monitoring or for trapping vehicles by matching the vehicle plate number to a dynamic database, for cases such as stolen or suspicious vehicles.

TYPICAL APPLICATIONS: Traffic surveillance, traffic enforcement, average-speed calculations, car trapping, security and toll-road installations.

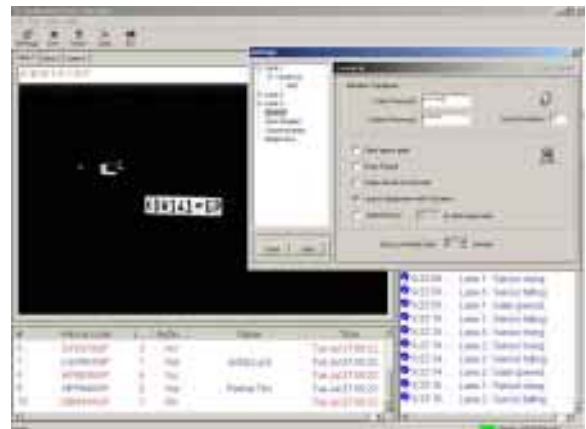


Figure 1 Sample

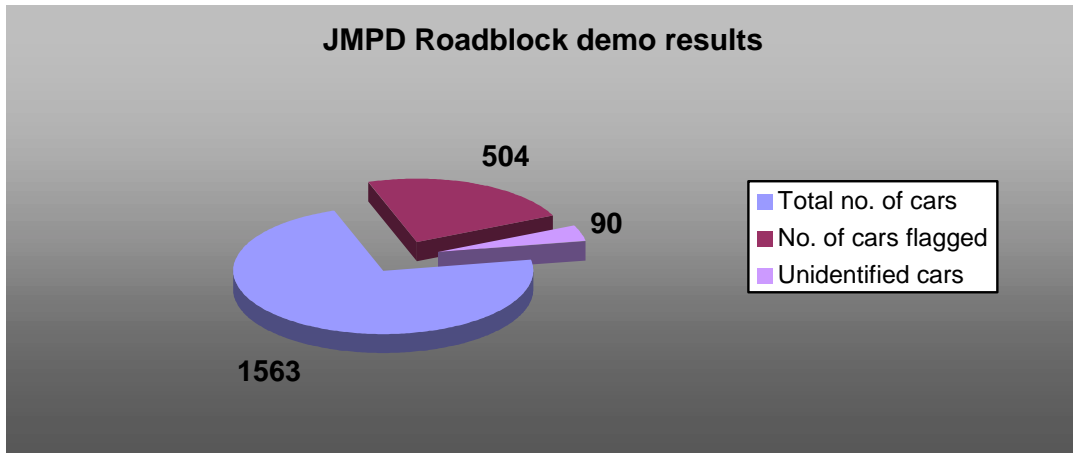


Figure 1 represents the following information:

- The total number of cars that passed through the roadblock.
- The total number of cars with outstanding warrants, stagnant cases etc.
- The total number of cars that were not correctly identified due to no number plates, broken plates etc.

Typical system layout:

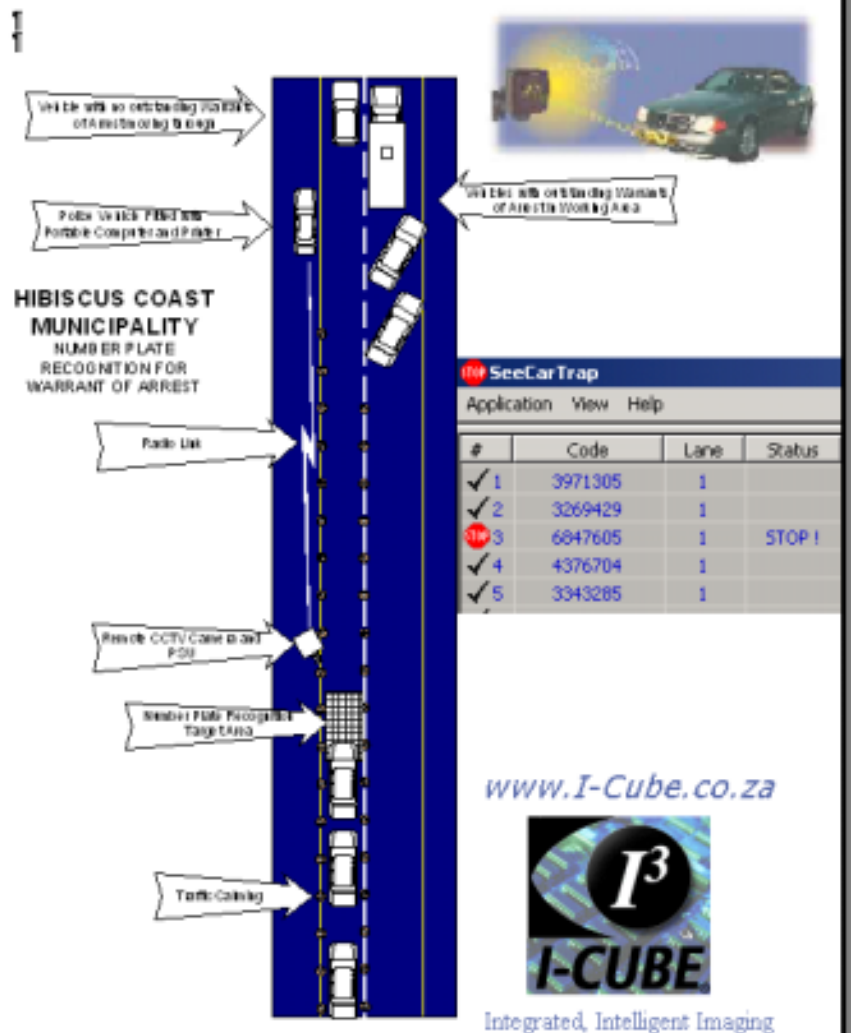


Figure 2 Sample

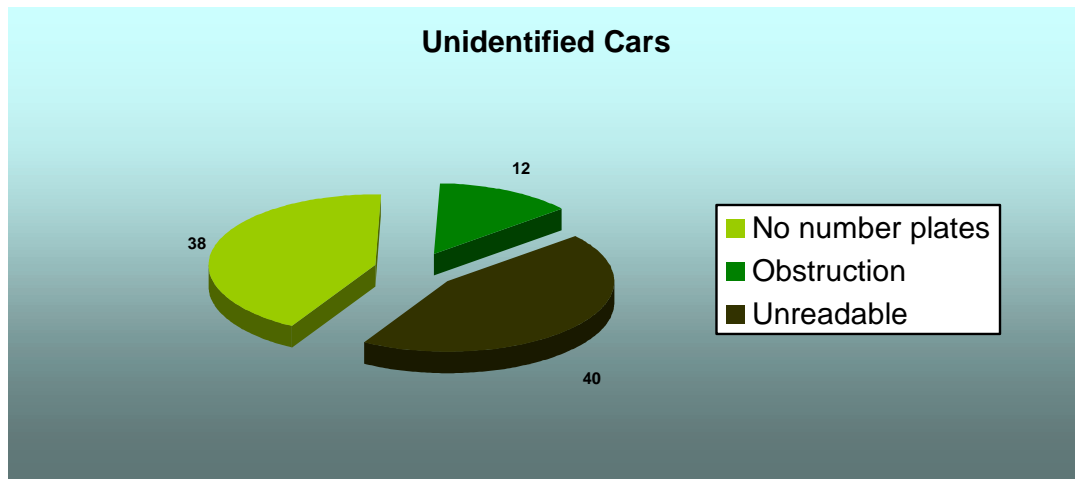


Figure 2 represents the following information:

- No number plates on cars
- Obstructions from bumpers or positioning of number plate
- Unreadable number plates



