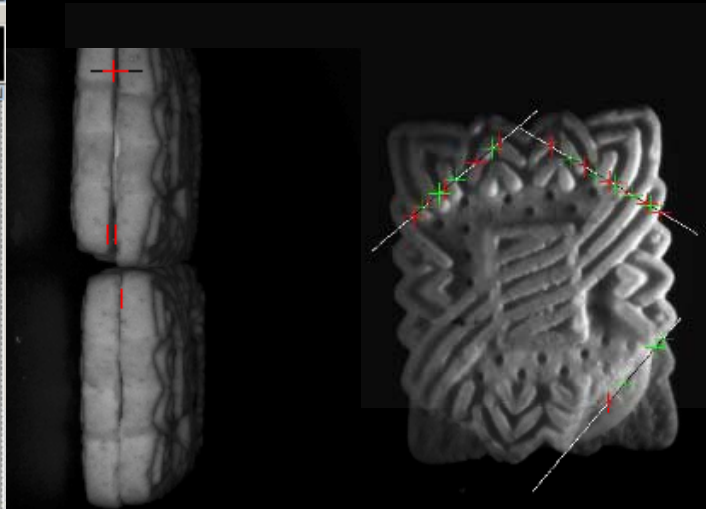
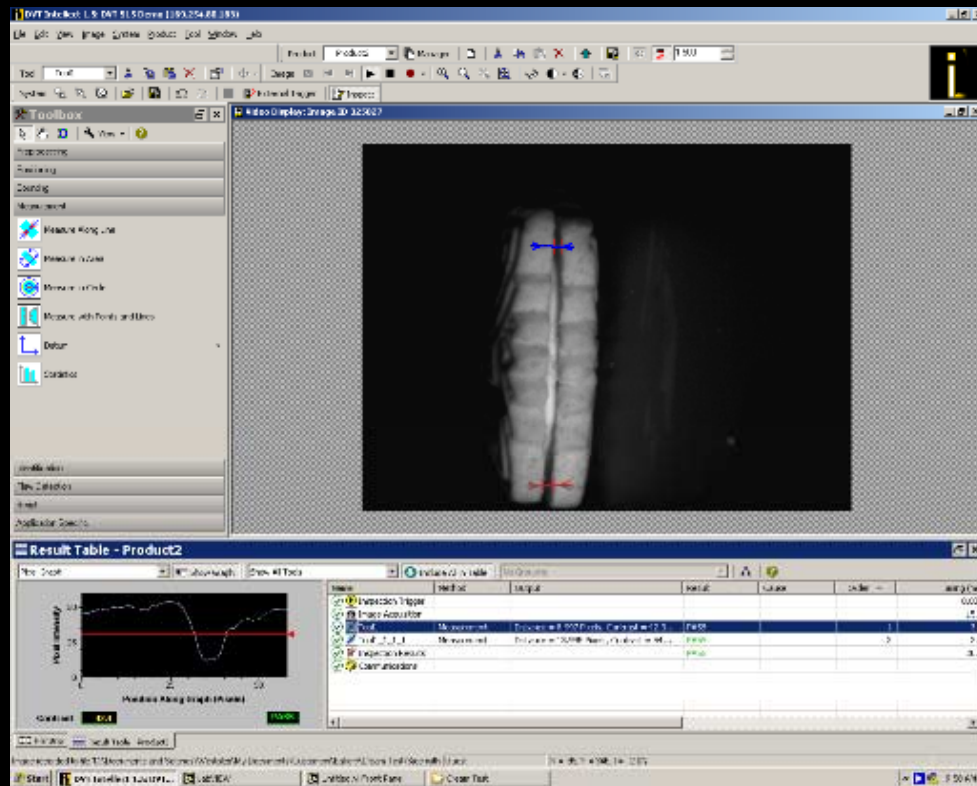


BISCUIT PRICING



AUGUST
2008

“..any sufficiently advanced technology is indistinguishable from magic.” Arthur C. Clark

WORLD CLASS,

Background: An automated biscuit inspection system using cameras is proposed.

DVT 515 is proposed:



-1 DVT 515 for lack of filling

- 1 DVT 515 for broken biscuits

Requirement: Provide image analysis technology linked to a camera to confirm the biscuit is whole and filling is present.

If biscuit broken or no filling, biscuit is rejected.

Based on the Initial Site visit:

POSSIBLE SOLUTION

2 cameras per lane

1 for filling, 1 for breakages

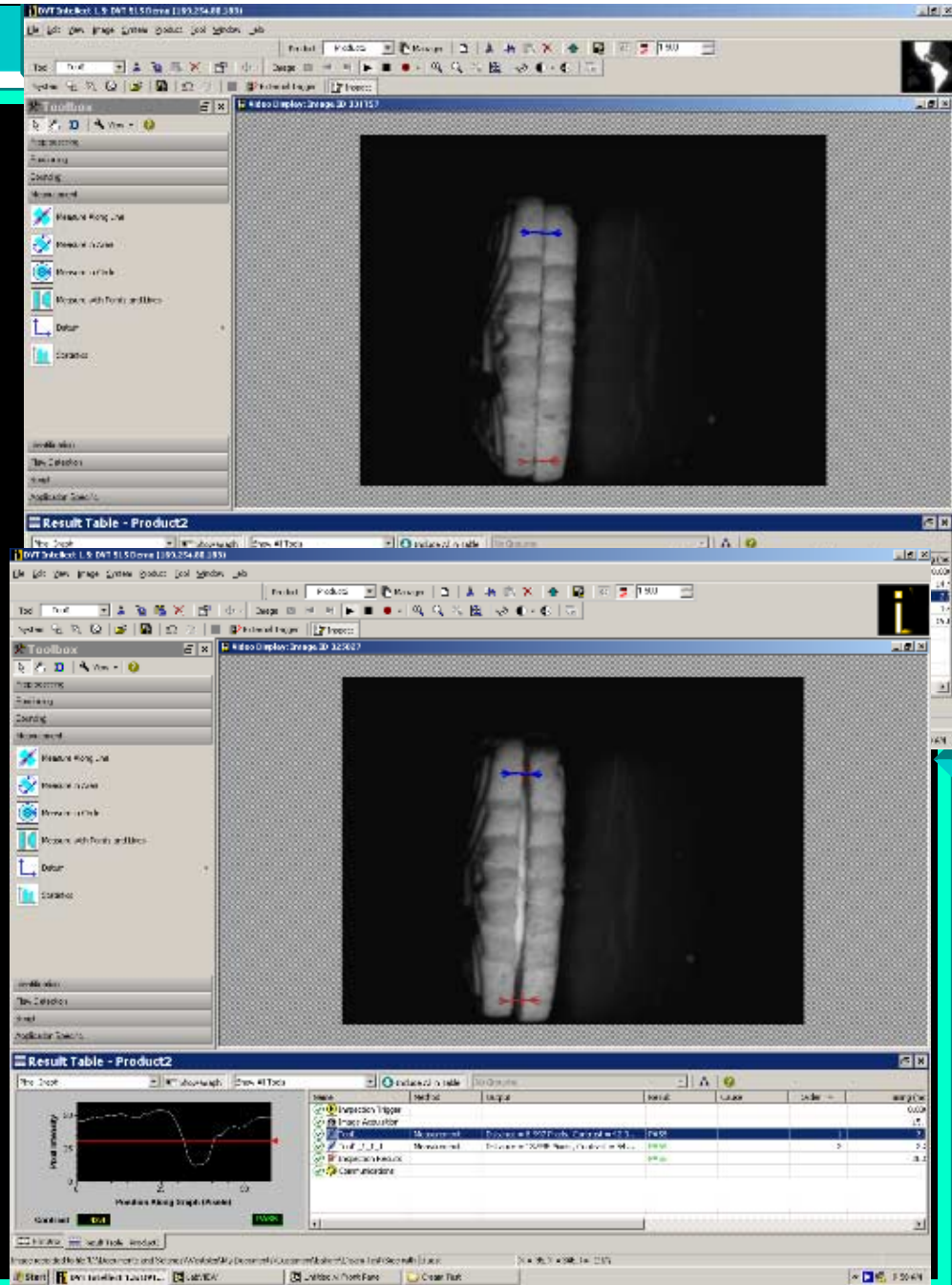
10-15 biscuits per second

10 cm working area

Concern of cream on lens?

Per Lane:

- ◆ DVT 515 x 2
- ◆ Lens x 2
- ◆ Lights x 3
- ◆ Cables / Mounting
- ◆ Install
- ◆ Software setup



ROI:

(Please see biscuit ROI calculations)

- ◆ Months for pay-back (ROI) based on flawed product **13.35**
- ◆ Months for pay-back (ROI) based on labour costs **24.04**
- ◆ Month for pay-back (ROI) based on returned product **29.68**

ASSUMPTIONS:

- ◆ The type / position / mounting / lighting of camera will depend on a number of factors including the speed.

- ◆ This will be finalized after field tests.

