



48 Max Michaelis Street
Montgomery Park
Johannesburg
2195
South Africa
brandz@mweb.co.za
Cell +27 11 82442 9246

I-Cube / Sure Park Systems
Roadblock demo for the JMPD
Date : W/E 18/19 March

DEMO EQUIPMENT: A single lane, low speed PC based LPR system was provided as a demonstration of the HIGH-SPEED TRAFFIC MULTI-LANE PORTABLE LPR SYSTEM, which is required.

SYSTEM DESCRIPTION: SeeTraffic is a PC based vehicle license plate recognition (LPR) and processing system, specially designed for high-speed traffic applications. The system can support multiple traffic lanes in various configurations, and single or double cameras per lane.

SEE TRAFFIC head camera / illumination units can be vehicle mounted, on the roadside, on bridges, or above other above-lane structures, as well as at mobile temporary installations. The system may also include a special software-trigger, which eliminates the need for external triggering mechanisms such as loop detectors, or laser sensors.

SYSTEM USE: This system can be used for traffic surveillance and monitoring or for trapping vehicles by matching the vehicle plate number to a dynamic database, for cases such as stolen or suspicious vehicles.

TYPICAL APPLICATIONS: Traffic surveillance, traffic enforcement, average-speed calculations, car trapping, security and toll-road installations.

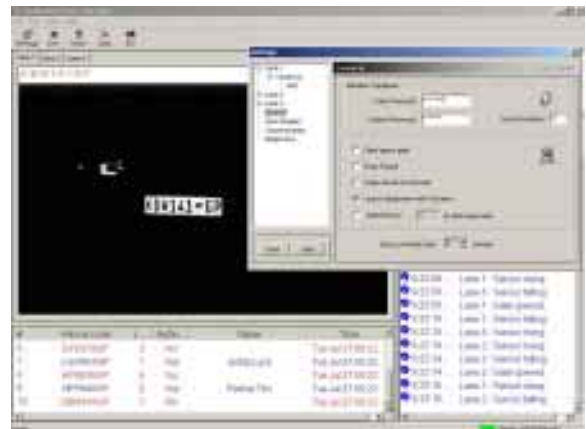


Figure 1 Sample

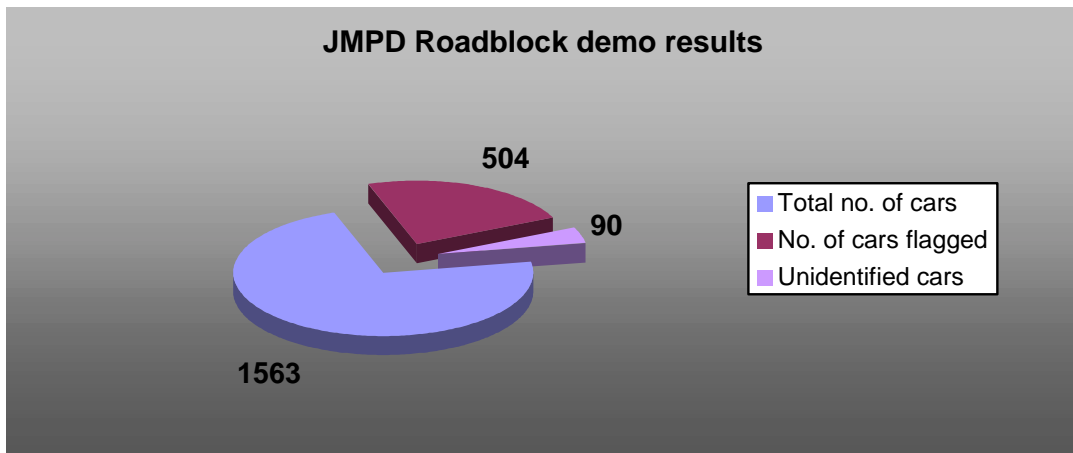


Figure 1 represents the following information:

- The total number of cars that passed through the roadblock.
- The total number of cars with outstanding warrants, stagnant cases etc.
- The total number of cars that were not correctly identified due to no number plates, broken plates etc.

Typical system layout:

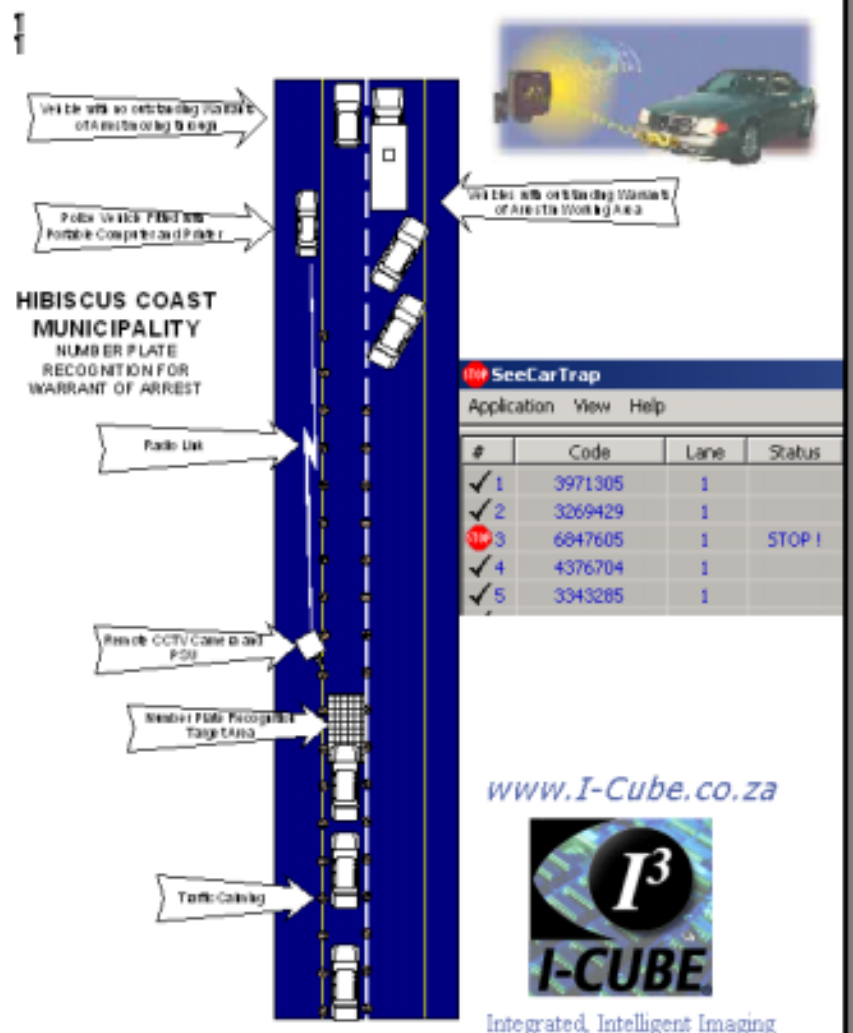


Figure 2 Sample

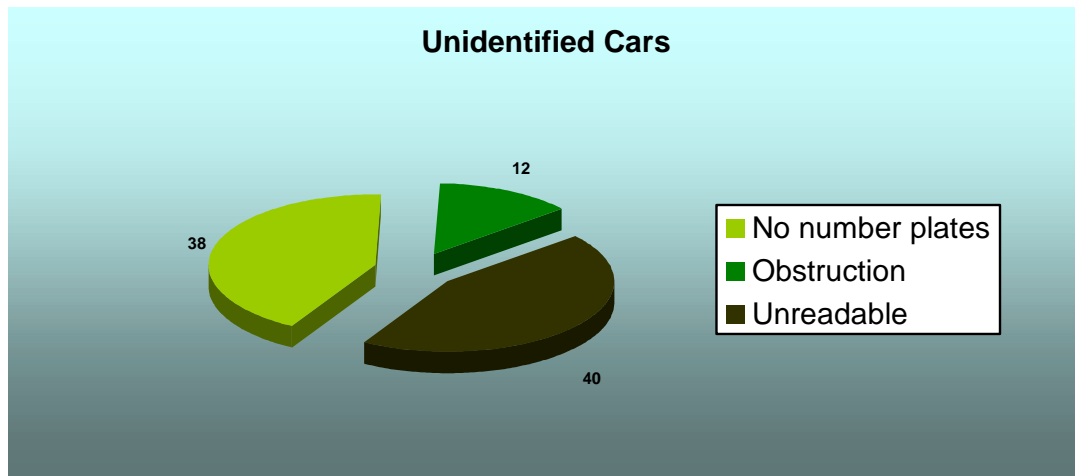


Figure 2 represents the following information:

- No number plates on cars
- Obstructions from bumpers or positioning of number plate
- Unreadable number plates





48 Max Michaelis Street
Montgomery Park
Johannesburg
2195
South Africa
brandz@mweb.co.za
Cell +27 11 82442 9246

I-Cube / SPS's Service Offering to Metro Police

- A 'Flagging' system identifying misdemeanours according to the Metro's database.
- Printed information of the roadblock available immediately after the roadblock for de-briefing purposes.
- A redundant system which has sufficient hardware & software backup in case of failure.
- A mobile system which is versatile enough to operate in any roadblock conditions.
- A system, which is capable of operating equally well during the day and night.
- An analytical system that's able to do graphical comparisons of various roadblocks and pick up certain trends.
- A system that fully complements law enforcement of the Metro Police.

I-Cube / SPS's Future Service Offering to Metro Police

- A system that will match up car registration to colour of car.
- Three cameras per lane (2 front number plate – different angles and 1 for the rear number plate.)
- This will ensure a higher capture success rate due to missing number plates or bumpers obstructing certain number plates.
- Real-time database referencing.



Barry T. DUDLEY

I-

CUBE (I3 - Integrated, Intelligent, Imaging)

(MBA {IT}; MSc {Image Analysis}; BSc {Brewing}; BSc Hons {Waste Technology})

LICENSE PLATE RECOGNITION AND FACIAL IDENTIFICATION SOLUTIONS

<http://www.i-cube.co.za/>

MADADENI

82 Kloof Falls Rd

Kloof, Durban, Kwa-Zulu Natal, 3610, South Africa

Cell: +27 (0) 82 562 8225

PH +27 (0) 31 764-3077

Fax 031-7643077

E-mail: info@I-Cube.co.za

Quote: On the plains of hesitation lie the blackened bones of countless millions who at the dawn of victory lay down to rest, and in resting died.